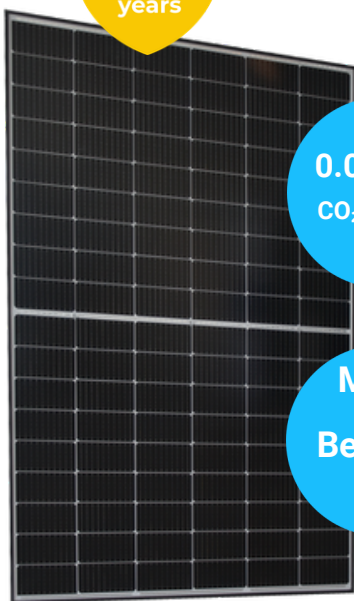


## Performance 450

Warranty  
**25**  
years



0.017 Kg  
CO<sub>2</sub>e / kWh

Made  
in  
Belgium



### Electrical characteristics

Pmax (Wc)*	450
Vmp (V)	33,09
Imp (A)	13,62
Voc (V)*	40,25
Isc (A)*	14,47

(\* Measurement tolerances: ±5% for Pmp, ±3% for Voc and Isc.

All measurements are at STC (25°C, 1000W/m<sup>2</sup>, A.M. 1.5).

Temperature coefficients: Pmp: -0.38 %/°C, Voc: -0.27 %/°C, Isc: +0.04 %/°C. NOCT: 46°C ±2°C.

### Certifications and warranties

- IEC 61215-2:2021 and IEC 61730-2:2018
- Product warranty: **25 years**
- Performance warranty: **25 years**
- Power degradation: 1% in the first year and 0.6% per year thereafter
- Electroluminescence and flash: **100% tested**
- Safety class: II
- Maximum system voltage: 1500 VDC

### Packaging

- Stackable wooden pallet
- 31 panels (vertical) per pallet
- Dimensions: 1740 x 1150 x 1290 mm

### Composition and technical specifications

- Monocrystalline **TopCon cells**, 108 half-cut M10
- Tempered glass: 3.2 mm with anti-reflective coating
- Frame: black anodized aluminium
- Backsheet: white, fluorine-free
- Junction box: IP68
- Connectors: MC4 compatible, 1.2 m cables
- Bypass diodes: 3
- Silicone-free panel
- Maximum load: 2400 N/m<sup>2</sup> (positive and negative pressure)
- Hail resistance: 25 mm at 23 m/s
- Dimensions: 1736 x 1146 x 35 mm / Weight: 21.5 kg

