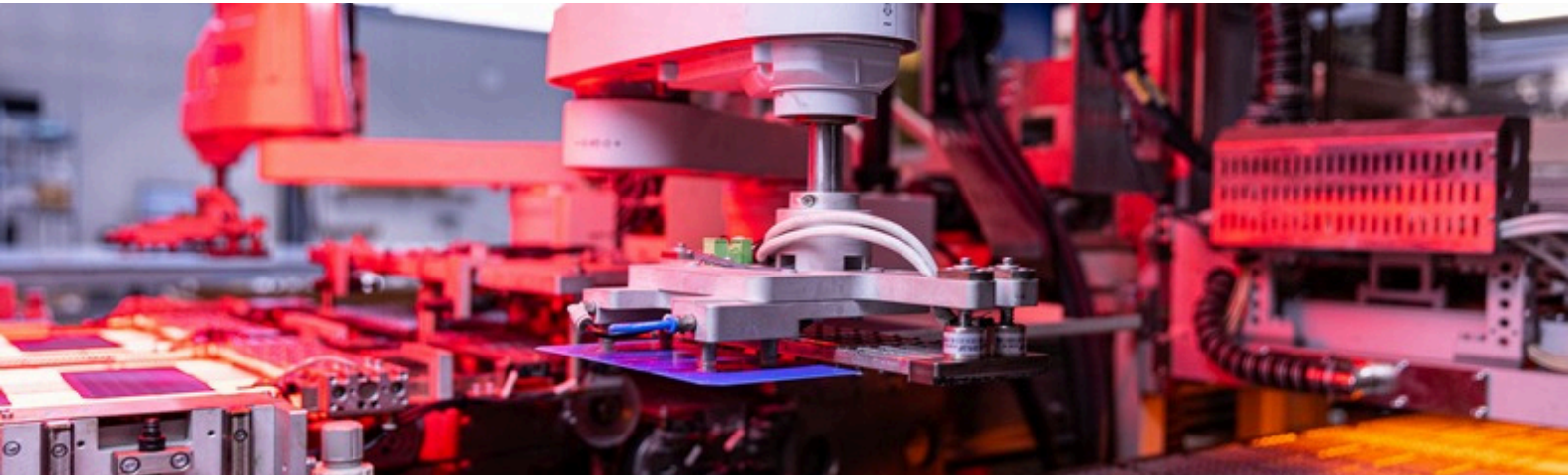




Range of panels



Belga Solar

Belgian manufacturer of standard and customised panels



Quality

6-point quality control / 100% tested
Optimised rigidity thanks to the 35 mm frame



Warranty

Guaranteed performance and efficiency
Up to 30-year warranty



Local Service

Production, local teams and administrative headquarters are based in Belgium



Environment

Low carbon footprint
Very high recyclability rate



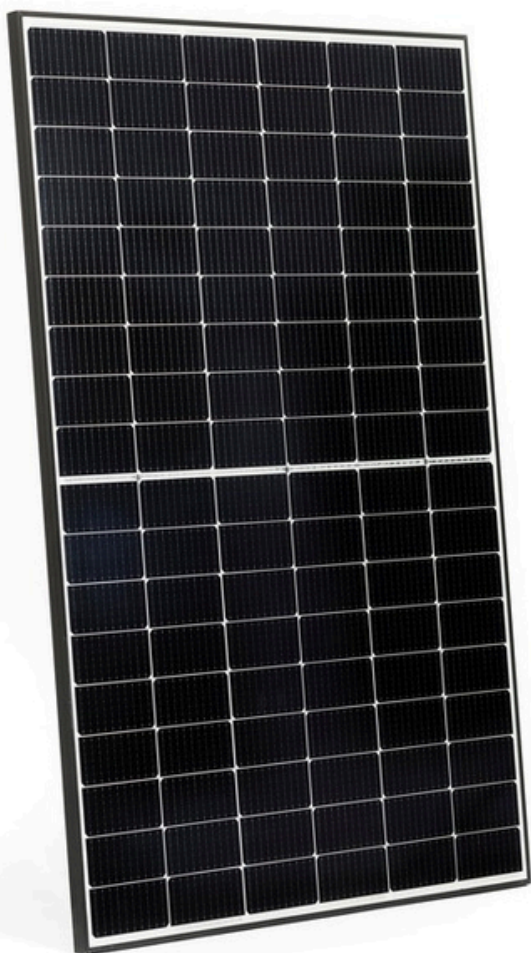
Commitment

B Corp certified manufacturer
Made in Belgium
Compliant with the Net Zero Industry Act



Performance

450 - 505 Wc



The Performance panel meets the requirements of customers seeking performance, with simple installation and adaptability to different types of roofs :

- Flat roofs
- SMEs/Large companies
- Public institutions (schools, military, hospitals, etc.)

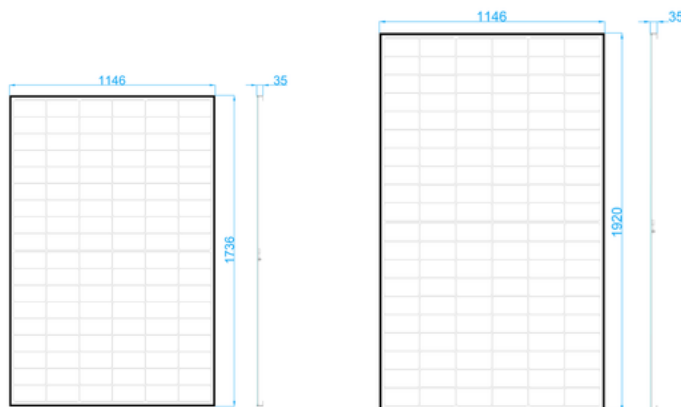


Absolute power



Yield and efficiency

Available sizes



Other formats available upon request



Design

430 - 490 Wc

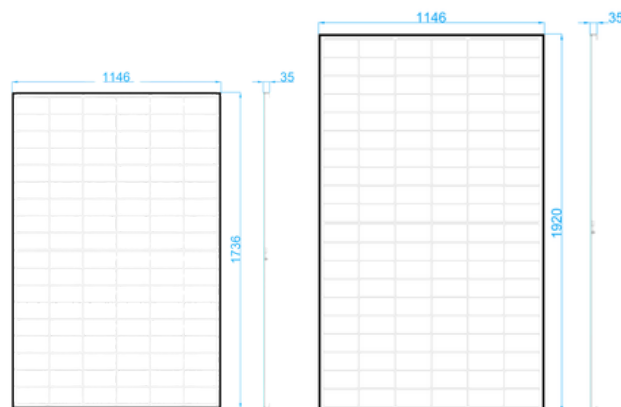


The full-black panel design is discreet, visually appealing, and blends seamlessly into modern roofs. Ideal for :

- slate roofs
- pitched roofs

Aesthetics - Full black

Available sizes



Other formats available upon request



SkySafe

445 - 500 Wc

Innovation
2026



Specially designed for airport areas, this panel uses glass with one of the lowest luminance levels (cd/m^2) on the market. Made in Europe and resistant to extreme impacts, this panel has been designed for critical environments.

Airports, airport surroundings, along roads and railways



Ultra resistant

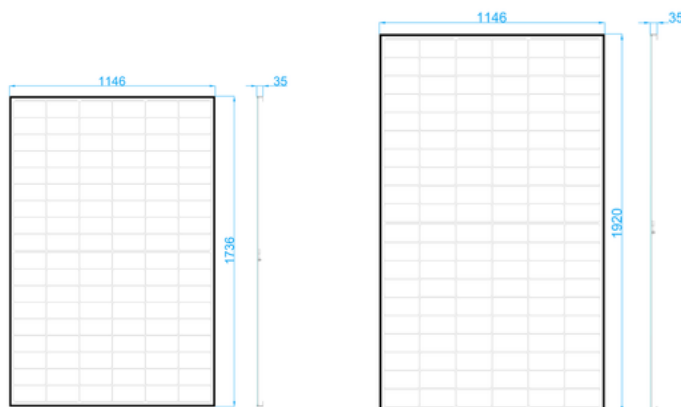
3.2 mm extra-clear tempered glass, Made in Europe
Storm Resist RG5 - Hail resistance 50 mm at 30 m/s
35 mm wide frame - optimised rigidity



Safety

Anti-glare glass, glass luminance: $3,100 \text{ cd}/\text{m}^2$
Complies with EASA requirements ($< 20,000 \text{ cd}/\text{m}^2$)

Available sizes



Other formats available upon request



ArtDesign

445 - 500 Wc

Innovation
2026



Specially designed for demanding architectural environments, the Art Design panel combines maximum integration, optimal security and customised adaptation. Ideal for :

- demanding architectural projects
- preventing glare disturbance for nearby residents
- facade installations

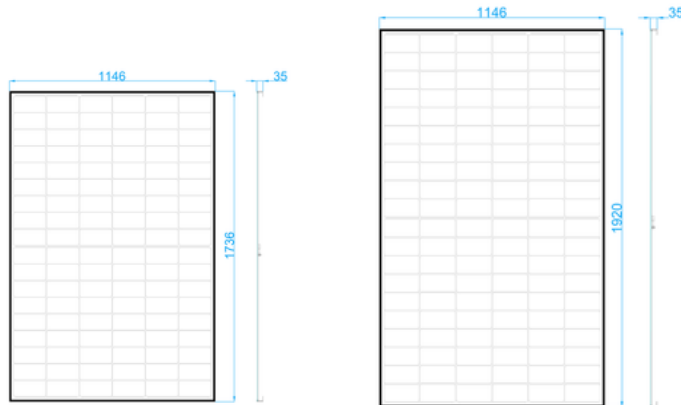


Tailor-made



Maximum integration

Available sizes



Other formats available upon request



Glass-Glass

440 - 495 Wc



The glass-glass panel combines bifaciality, durability and increased safety, with typical applications such as :

- carports
- verandas

Various glass thicknesses available.



Performance



Brightness

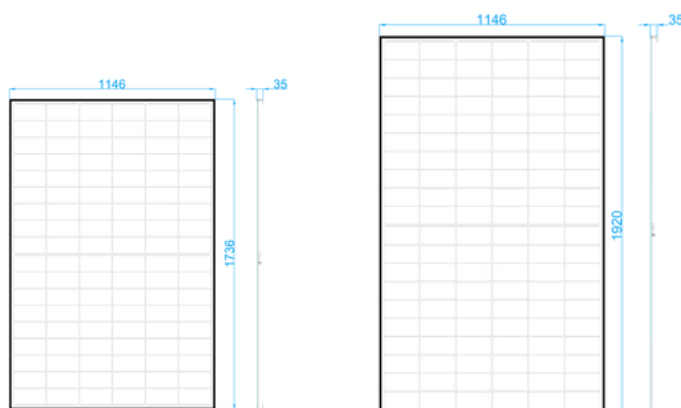


Bifacial



Safety

Available sizes

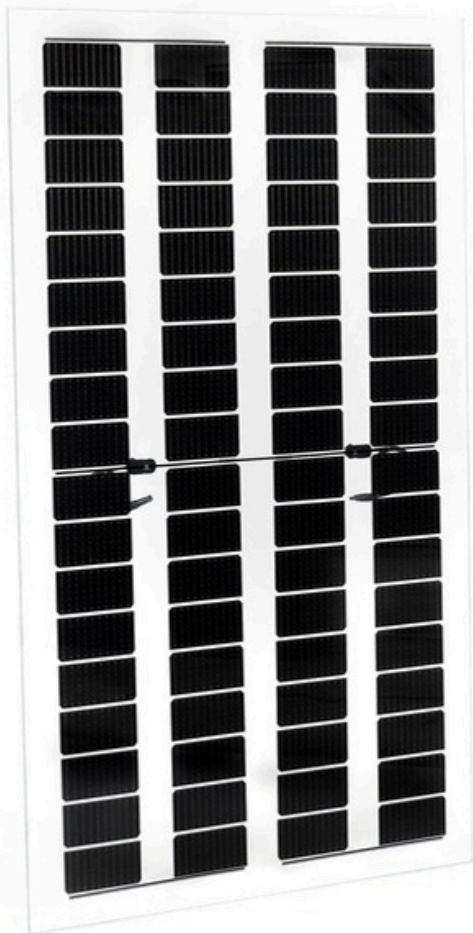


Other formats available upon request



Transparent

265 - 300 Wc



Thanks to its spaced cells, the Transparent panel combines solar power generation, light transmission and maximum safety, with ideal applications such as :

- greenhouses and glass roofs
- agrivoltaics
- architectural projects
- railings

Different glass thicknesses available.



Transparency

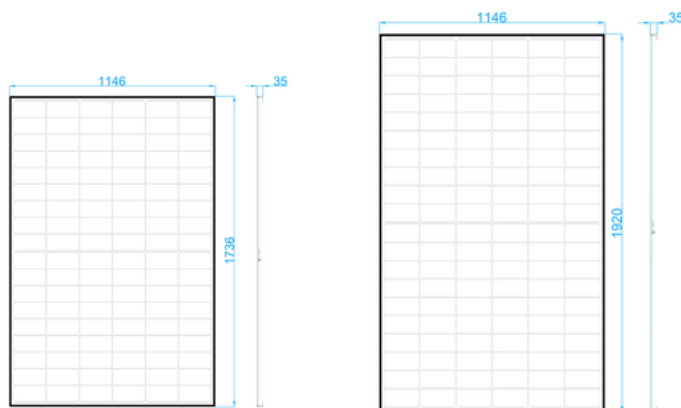


Safety



Bifacial

Available sizes

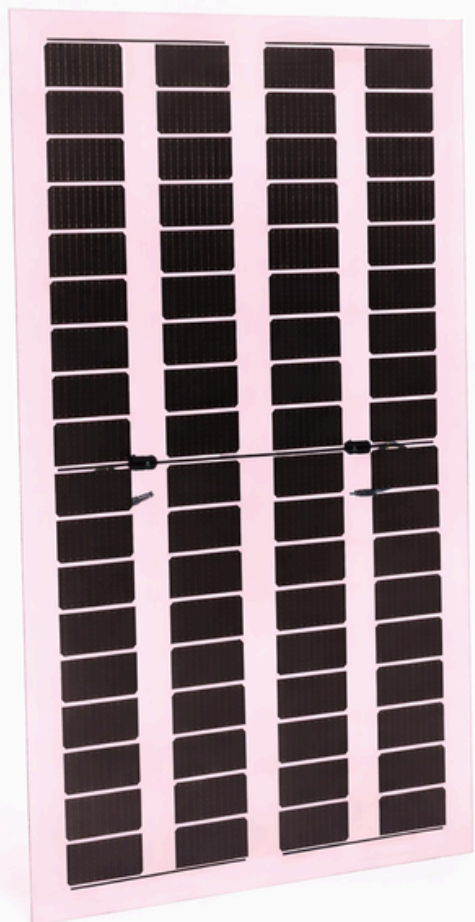


Other formats available upon request



Agri

265 - 300 Wc



The Agri panel is based on the same principle as the Transparent panel, but incorporates a coloured encapsulant into the glass, allowing the transmitted light spectrum to be adjusted to optimise plant growth and ensure efficient energy production, making it particularly suitable for greenhouse cultivation.

Different glass thicknesses available.



Technology

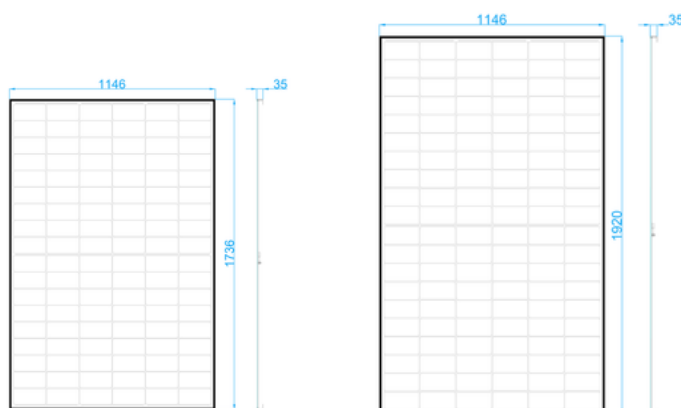


Safety



Bifacial

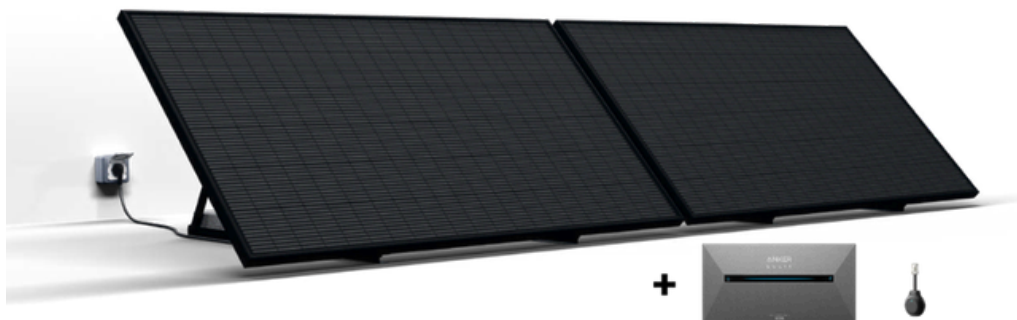
Available sizes



Other formats available upon request



Plug and Play



INSTALL, PLUG IN, SAVE MONEY

With Belga Solar's plug-and-play solar solutions, generating and consuming your own electricity becomes simple, immediate and accessible to everyone: in just a few minutes, you can install your kit on the ground or on your terrace, plug it into a standard electrical socket and start reducing your consumption from the grid while making lasting savings – all with high-performance Belgian panels, guaranteed for up to 25 years.



Quick and easy installation



Immediate savings



Ideal for tenants

Kits available

3 kits available:

- Smart kit (1 panel)
- Premium kit (2 panels)
- Autonomy kit (2 panels + battery)



Driveable solar tiles



The result of a technological partnership with Colas, Belga Solar manufactures these unique photovoltaic tiles. They transform roads and traffic areas into energy-producing surfaces, without requiring additional land and with mechanical resistance suitable for vehicle traffic.

Such as :

- cycle paths
- car parks



Technology



Valuation



Integration





THEY TRUST US



AND MANY MORE...

Contact us

Belga Solar - Zone d'activités Nord, 89
BE 5377 Baillonville
+32 (0) 86 / 38 81 38 - welcome@belgasolar.com
www.belgasolar.com

Visit our production site by contacting us.