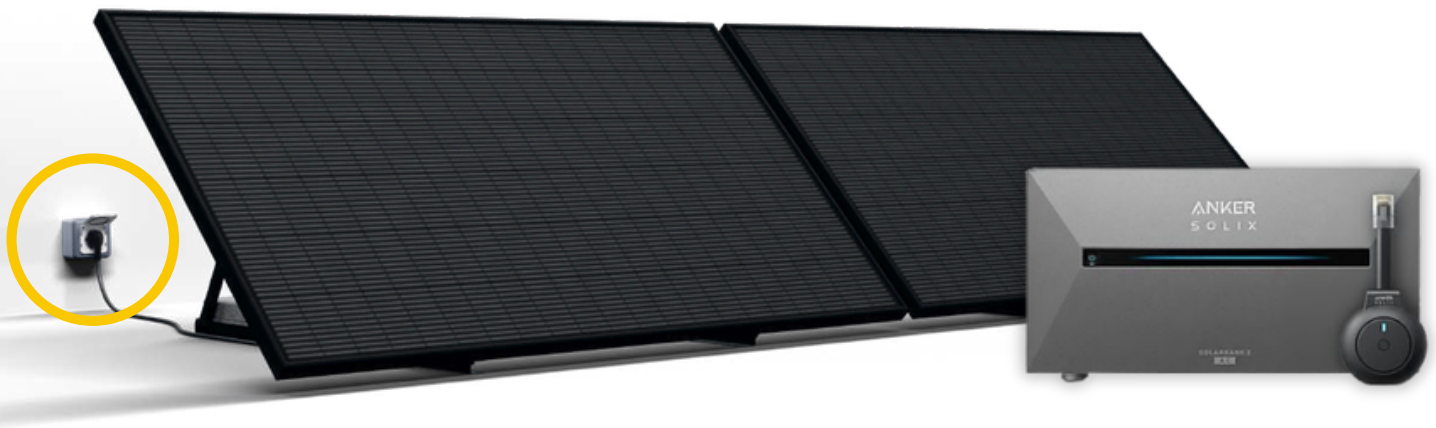
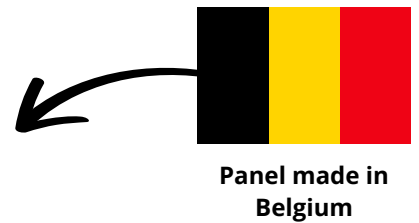


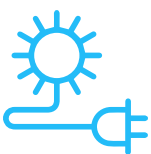
THE ONLY BELGIAN SOLAR STATION, PLUGGED INTO AN OUTLET



Proud to choose solar energy



Plug in in 5 minutes and save directly on your electricity bill!



Quick to install

Very easy, delivered ready to use, plug in and start saving in 5 minutes.



Quickly profitable

Your station will pay for itself in 3 to 5 years on average.



In serenity

Component reliability: performance assured and guaranteed for up to 25 years.



Attractive

Designed to combine aesthetics, scalability, and portability.



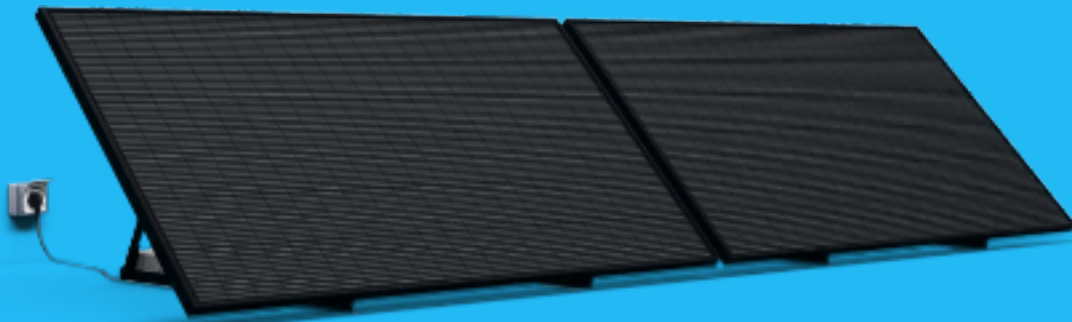
Carbon neutrality

Panels made in Belgium.
1 panel purchased = 4 trees planted with Graine de Vie.

SIMPLE AND EASY



A Plug & Play Autonomy station: Solar panels connected to a battery via a simple plug



It only takes 5 minutes to plug it in and start saving money on your electricity bill.



Whether you are a tenant or a homeowner, you can quickly and easily switch to solar energy.



The only station whose signs are manufactured in Belgium. Supporting local employment.

4 simple steps to save money and take action on climate change



1 I install

I open the package and set up my ready-to-use station, pointing it toward the sun.



2 I plug in

I plug it in and the electricity generated is distributed directly to my devices.



3 I save money

I save money instantly because I reduce my network consumption.



4 I act for the planet

I am reducing my carbon footprint.

QUICK RETURN ON INVESTMENT

An 800 W solar station
Up to 30% savings

An 800W station can produce between **800 kWh** and **1000kWh** depending on your location and can offset the equivalent consumption of all the following appliances:



LAPTOP
22 kWh



INTERNET BOX
97 kWh



DISHWASHER
192 kWh



TV DECODER
87 kWh



TV LED
30 kWh



2 SMARTPHONES
6 kWh



WASHING MACHINE
101 kWh



1-DOOR REFRIGERATOR
174 kWh

Pays for itself in an average of 3 to 5 years anywhere in Belgium.

Track your production with your expert tracking app

Forget simple connected outlets! Track your production with your free, comprehensive, expert photovoltaic monitoring app, which collects production data via Wi-Fi or Bluetooth.



ATTRACTIVE



Resistant “booster” production support

◆ **Adjustable tilt between 27°, 42°, and 63°:**

3 adjustable angles depending on the time of year.

27°: Summer

42°: Fall and Spring

63°: Winter

◆ **Galvanized steel**



Aesthetics

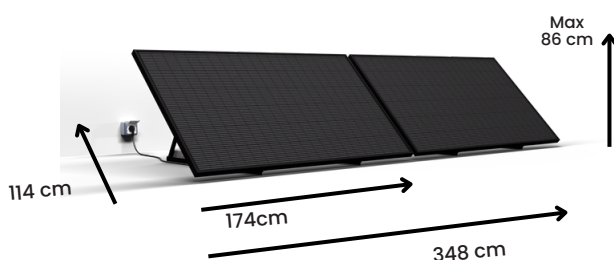
- ◆ Full black design panels
- ◆ Black powder-coated support

Several possible installation locations

- ◆ Terrace, garden, flat roof, etc.



DIMENSIONS AND WEIGHT:



33 kg per panel block, excluding ballast

Scalable and mobile

- ◆ Removable
- ◆ Minimum space requirement

PEACE OF MIND FOR THE LONG TERM

thanks to our warranties!



Belga Solar solar panel manufactured in Belgium

- Designed and manufactured in **Baillonville** by Belga Solar
- 84% power output guaranteed for 25 years
- High-performance cell technology
- **25-year** manufacturer's warranty



Reference Plug-In Battery: Anker Solarbank 2 E1600 AC

- Anker is the **global leader** in plug-in batteries
- 1.6 kWh expandable capacity, compatible and compliant with your electrical network according to Synergrid C10/26 certification
- **10-year** manufacturer's **warranty**
- **Port P1** for optimal management
- Remotely monitored using the tracking app

Highly resistant support

- Manufactured by a specialist company in France
- Recommended for installation on the ground with ballast
- Resistant to wind, storms, hail, etc.
- Made of galvanized steel, weight 8 kg



ITS IMPACT WILL MAKE YOU PROUD



Panel made in Belgium



Belga Solar is the only manufacturer of solar panels in Belgium.

Supports manufactured in France



Company specializing in France.

Assembled by the Belga Solar teams

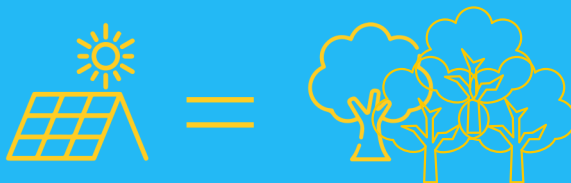
Directly in Baillonville, for optimal quality control of Plug and Play stations.



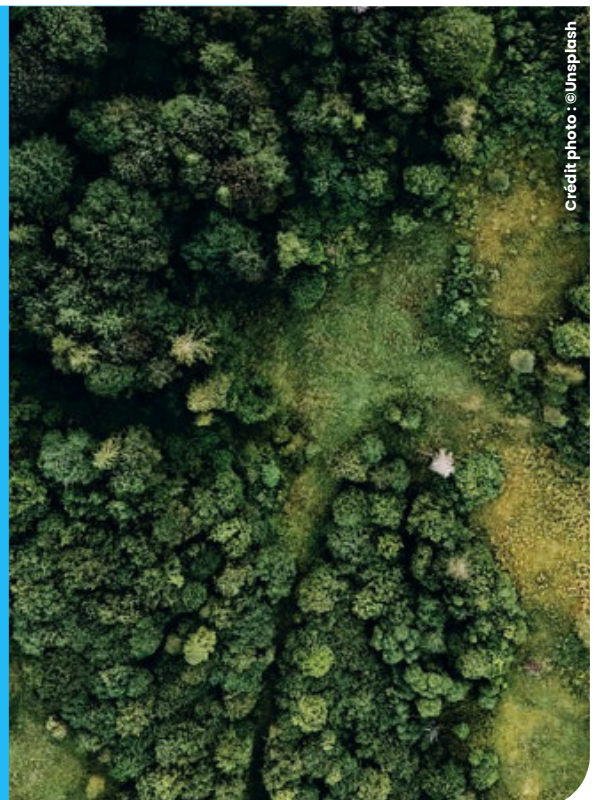
Carbon neutral



Graine de Vie fights against global warming with reforestation programs around the world.



1 solar panel purchased = 4 trees planted by the Graine de Vie association.



OUR CORE VALUES



Ethics

Being transparent, guaranteeing fair prices, and earning your trust with tailored advice.



Responsability

Minimizing the carbon footprint of our products and offering solutions that are accessible to everyone.



Commitment

Having expertise, being innovative, and supporting you as best as possible with the best service.



Reliability

Offer products that guarantee safety and long-term performance.



A MISSION-DRIVEN COMPANY

Belga Solar: Your solar partner in Belgium

Since 2012, **Belga Solar** has specialized in the manufacture and installation of photovoltaic panels in Belgium.

Our mission is to contribute to the European energy transition while stimulating the reindustrialization of Belgium.

With Belga Solar, choose a **trusted partner** to generate your own electricity and reduce your energy bill in the long term.



FOCUS ON OUR PANEL



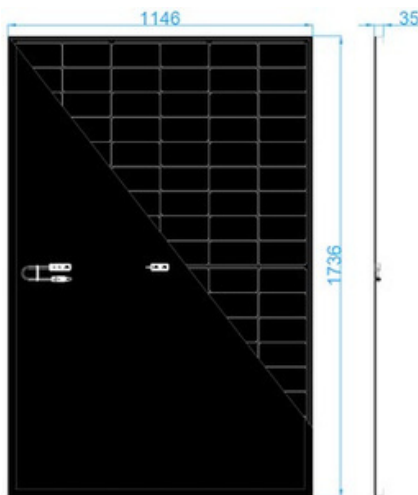
Design 415



➤ Electrical characteristics

Pmax (Wc)*	415
Vmp (V)	31,72
Imp (A)	13,08
Voc (V)*	37,79
Isc (A)*	13,78

(* Measurement tolerances: +/-5% for Pmp, +/-3% for Voc and Isc. All measurements are under STC conditions (25°C, 1000W/m², A.M. 1.5). Temperature coefficients: Pmp: -0.38 %/°C, Voc: -0.27 %/°C, Isc: +0.04 %/°C. NOCT: 46°C +/-2°C.



➤ Certifications and warranties

- IEC 61215-2:2021 and IEC 61730-2:2018
- Product warranty: **25 years**
- Performance warranty: **25 years**
- Power degradation: 1% in the first year and 0.6% per year thereafter
- Electroluminescence and flash testing: **100% tested**
- Safety class: II
- Maximum system voltage: 1000 VDCVDC

➤ Composition and technical specifications

- Monocrystalline PERC cells, 108 half-cut M10
- 3.2 mm tempered glass with anti-reflective coating
- Black anodised aluminium frame
- Fluorine-free black backsheet
- Junction box: IP68
- Connectors: MC4 compatible, 1.2 m cables
- Bypass diodes: 3
- Silicone-free frame
- Frame 35 mm
- Maximum load: 2400 N/m² (positive and negative pressure)
- Hail resistance: 25 mm at 23 m/s
- Dimensions: 1736 x 1146 x 35 mm / Weight: 22.5 kg

➤ Packaging

- Stackable wooden pallet
- 31 panels (vertical) per pallet
- Dimensions: 1740 x 1150 x H 1290 mm

ZOOM BATTERY



ANKER SOLIX SOLARBANK 2 E1600 AC DUO

enables 100% of the electricity generated to be used

EFFICIENT - IDEAL FOR MAXIMIZING SELF-CONSUMPTION - 10-YEAR WARRANTY



- **High capacity** : 1600 Wh of usable storage - Scalable storage up to 9.6kWh.
- **Reliable** : LiFePO4 battery - Up to 6,000 charge cycles. Designed for a service life of up to 15 years. Can also be used as a backup in the event of a power outage.
- **Resistant** : IP66 protection rating: rainproof, frostproof, and dustproof.
- **Connected** : Built-in Wi-Fi to enjoy the ANKER app. Real-time visualization of charging, discharging, and savings.
- **Safety** : Complies with all Belgian Synergrid electrical standards and is compatible with all electrical installations.
- **Smart** : Thanks to its connection to your smart meter, the PI meter tracks and optimizes electricity consumption and production in real time.

The Solarbank 2 E1600 AC replaces or complements the conventional microinverter to transform a Plug and Play kit into a true solar system with storage.

It can receive up to **1,200 W** of DC power via **2 MPPT inputs (16-60 V)** and deliver up to **800 W** to the mains outlet, or **1,200 W** to the dedicated emergency output to power essential devices in the event of a power outage.



Access your production **24/7** via the app for simple, instant monitoring.
Remotely supervise the smooth operation of your installation with complete peace of mind.

The tracking app

tracks your production and savings

Simple



Free



Expert



Complete



ZOOM BATTERY



BP2700 EXPANSION MODULE



Product Description

The ANKER SOLIX BP2700 is the perfect expansion module for increasing the storage capacity of your ANKER SOLIX system. It is designed for those who want to maximize their energy autonomy with a sustainable and scalable solution.

Key Features

- **High additional capacity** : Provides 2,688 Wh of nominal energy, allowing you to easily increase your storage capacity.
- **Reliable LFP technology** : Uses LiFePO4 batteries with an exceptional lifespan of up to 6,000 charge cycles and over 10 years of optimal use.
- **Power** : Each module provides up to 1,800 W of rated power, meeting even the most demanding energy needs.
- **Robustness** : IP65 protection rating, guaranteeing total resistance to dust, weather, and harsh conditions.
- **Versatility** : Operates effectively in temperatures ranging from -20°C to $+55^{\circ}\text{C}$ and at altitudes up to 4,000 m.
- **Guaranteed Safety** : Certified according to the strictest IEC standards, ensuring safe use.
- **Compact and practical design** : Optimized dimensions (460 × 233 × 217.5 mm) and a weight of 24 kg for quick and easy installation.
- **Long-term reliability** : 10-year warranty.

Ideal Use

The BP2700 is designed to complement the Solarbank 2 E1600 AC, increasing your energy reserve for smoother consumption and greater autonomy in the event of a power outage. It is the ideal solution for upgrading your system according to your needs.

ANKER SOLIX



Anker SOLIX Solarbank 2 E1600 AC

Easy leveling. Savings day and night.

The most suitable AC-coupled leveling solution for all kits.



100% accounting of microinverters with AC coupling



Extension up to 2.4 kW input and 9.6 kW capacity



Zero waste thanks to the smart meter

Phone: +49 (0) 69 9579 7960

Email: support@anker.com

Note: Product specifications and details are subject to change without notice.
Please visit the official Anker SOLIX website for the latest and most accurate information.



community



website

Anker SOLIX Solarbank 2 E1600 AC

Basic features	
Rated capacity	100Ah/1,600Wh
Battery type	LFP
Battery cycles	6,000(70%)
Connectivity	
Smart app	Yes (Bluetooth, WLAN 2.4GHz)
Photovoltaic terminal	
Maximum PV input voltage	60 VDC
Maximum PV input current	16 VDC (by channel)
Maximum PV short-circuit current	20 VDC (by channel)
Maximum MPPT input power	1,200W
Voltage range	16 VDC to 60 VDC
Number of MPPT	2
CA Input (networked terminal)	
Maximum AC input power	1,000 W (1 unit) , 1,200 W (with battery), 2,000 W (bypass)
Maximum AC input current	10AAC
Nominal AC input voltage	L+N+⊕, 220VAC / 230VAC, 50Hz
AC Output (Network Terminal)	
AC output power	1,000 W (1 unit), 1,200 W (with battery)
Nominal AC output voltage	L+N+⊕, 220VAC / 230VAC, 50Hz
Maximum AC output current	3,5 AAC
Power factor	0.8 behind to 0.8 ahead
Battery	
Nominal battery voltage	16 VDC
Maximum charging current	70 ADC
Maximum discharge current	75 ADC
Maximum number of additional batteries	5
Maximum system capacity with additional batteries	9 L+N+⊕.
IEC code	IFpP51/161/120[5S]M /-20+50/90
Rated load capacity (1 unit)	1,000 W
Rated charging capacity with 1 battery	2,000 W
Rated charging capacity with 2 to 5 batteries	2,400 W
CA Input (offline terminal)	
AC input power	1,200 W max (micro-inverter)
Nominal AC input voltage	L+N+⊕, 220VAC/230VAC, 50 Hz
Power factor	0.8 behind to 0.8 ahead
CA Output (offline terminal)	
AC output power	1,000 W (1 unit) , 1,200 W (with battery), 2,000 W (bypass)
Rated AC output power	L+N+⊕, 220VAC/230VAC, 50 Hz
Power factor	0.8 behind to 0.8 ahead
General settings	
Charging temperature range	0°C to 55°C
Discharge temperature range	-20°C to 55°C
Self-heating temperature range	-20°C to 0°C
Maximum altitude	Less than 4,000 meters
Protection rating	IP65
Inverter Topology (Solar)	isolated
Protection class	Class I
Warranty	10 years
Dimensions and weight	
Dimensions	460 x 249 x 254 mm
Weight	22 kg



Contact us and let's move
forward with your project!

welcome@belgasolar.com

+32 86 38 81 38

www.belgasolar.com