

MODULE 160 GC

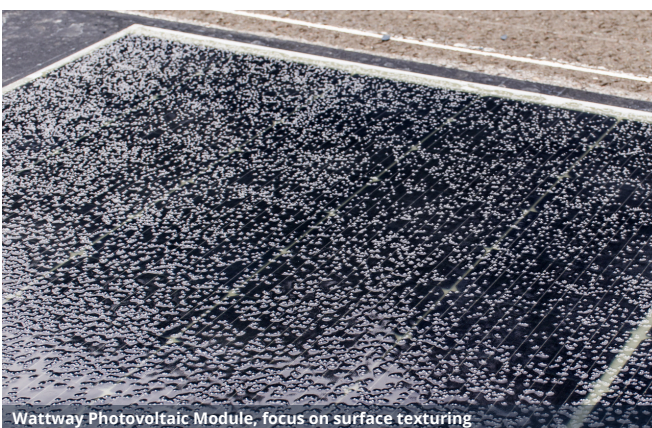
REF. V4T7

COMPATIBLE SOLUTION WATTWAY SYSTEM

POWERING YOUR APPARATUS IN RENEWABLE ENERGY

Colas has created Wattway, **an innovative system of mobile photovoltaic panels** that enables the sharing of infrastructure dedicated to mobility by generating electricity while preserving their supportive function for all modes of transportation.

The **Wattway Pack** delivers renewable energy to **roadside equipment** and offers energy services to remote locations. The modules are exceptionally thin and durable, adhering directly to the existing support structure.



The module's surface is textured to provide grip characteristics akin to those of a conventional road surface. These modules are primarily utilized to power bicycle and scooter charging stations, sensors, radars, cameras, street lamps, connected luggage, and more.



THE ADVANTAGES OF THE WATTWAY PACK



The inaugural photovoltaic road surface suitable for all vehicle types.



Energy generation in proximity to consumption sites.



Optimization of land resources, scarce in urban environments and invaluable in rural settings.

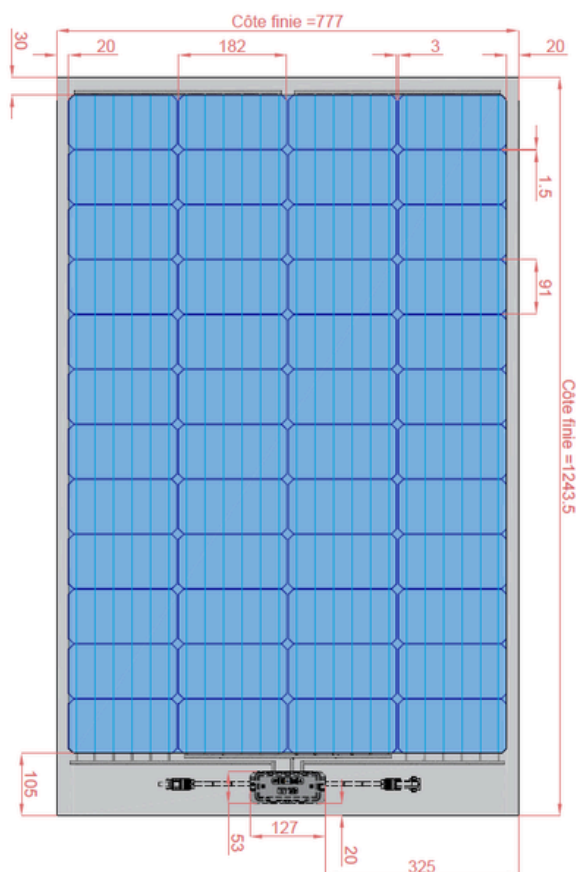


Resilient technology, impervious to climatic hazards, navigable.



Expedited: streamlined administrative procedures and straightforward installation.

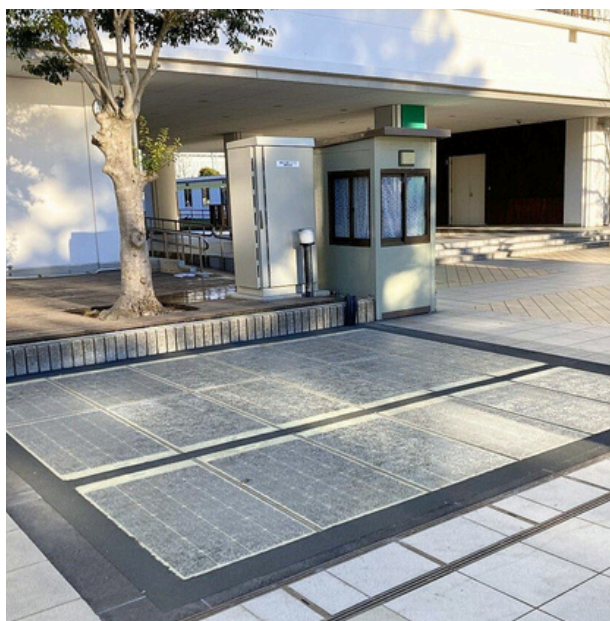
DIMENSIONS



¹This module employs an encapsulation identical to that of the Wattway module, which is certified as of mid-2024, and is the sole road photovoltaic module to have received IEC certifications.

² IK7 for cells / IK10 for the active components of the panel.

³The system's maximum voltage is contingent upon usage conditions (such as traffic and public accessibility) and must be determined by the customer.



MECHANICAL PARAMETERS

Dimension	1244 mm x 777 mm
Active surface	0,80 m ²
Thickness	4,4 mm
Weight	7 kg
Number of cells	48 M10 half-cells
Type of cell	Monocrystalline P-type PERC
Connectors	MC4
Cable length	850 mm
Junction box	2 diodes bypassed
Backsheet color	Transparent
Type of fastening	Adhered on asphalt or concrete
Frame	No
Electrical safety	Class II - IP68
Traffic resistance ¹	1 million wheel passages 13T
Load and shock resistance ²	IK7 / IK10
Skid resistance	SRT > 50 PMT > 0.6 in accordance with Circular 2015-19 DGTIM/DIT

PHOTOVOLTAIC ATTRIBUTES

Rated power	160 Wc
Cell efficacy	20,0 %
Output power tolerance	+/-5W
Voltage at rated power (Vmpp)	29.1V
Intensity at nominal power (Impp)	5,5 A
Open Circuit Voltage Voc (V)	32.7V
Short-circuit current intensity (Icc)	5,8 A
Coefficient of Current Temperature (μlcc)	+0,06% / °C
Coefficient of Temperature Voltage Open Circuit (Voc)	-0,30% / °C
Coefficient Temperature Power (Pmpp)	-0,39% / °C
Maximum system voltage cubed	120V
Inverse maximal current	25 A

